



Cobb, Lundquist & Atnip, Inc.
700 Everhart, Suite F-11
Corpus Christi, Texas 78411
AC 361 854-4448
Fax 361 854-4498
E-MAIL info@CLArealtors.com
www.CLArealtors.com

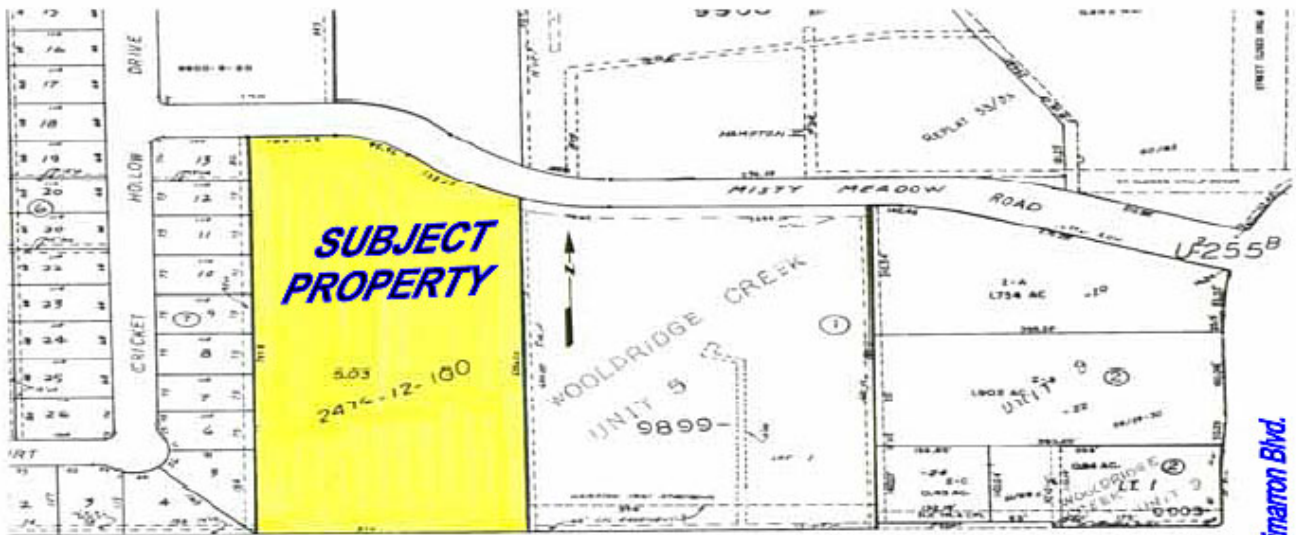


COMMERCIAL, INDUSTRIAL,
FARM & RANCH PROPERTIES

Commercial Property for Sale

ID #: 46
Location: Wooldridge Road and Misty Meadows
Price: \$766,873 (Taxes \$5,344.70 for 2005)
Status: AVAILABLE
Size: 5.03 acres or 219,106 square feet at \$3.50 per square foot.
Zoning: R-2 (Multiple Dwelling)
Contact: Hutch Bryan (hutch@clarealtors.com)

**** See Property Map on Page 2 ****



Wooldrige Road

Cimarron Blvd.