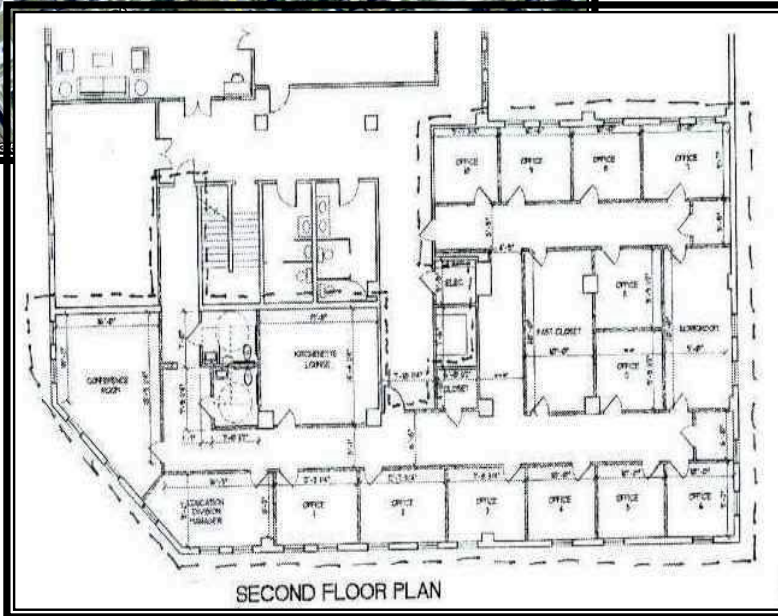


FOR LEASE

Second Floor 3,822 square feet

Six Points Office Space
1801 S. ALAMEDA, SUITE 220
CORPUS CHRISTI, TEXAS
3,822 SF +/- AVAILABLE

- ▶ Lease Rate: \$3,000/month
- ▶ Three (3) year minimum lease, base year taxes & insurance included
- ▶ Lease rate does not include janitorial or electrical
- ▶ There are 3 entrances and ample parking
- ▶ Lots of natural light
- ▶ Total of 17 offices
- ▶ 2 storerooms, 2 restrooms, and kitchen
- ▶ Elevator



CONTACT: Wayne Lundquist
Cobb, Lundquist & Atnip, Inc. * 700 Everhart Suite F-11, Corpus Christi, Texas 78411
(361) 854-4448 or Wayne@CLArealtors.com