



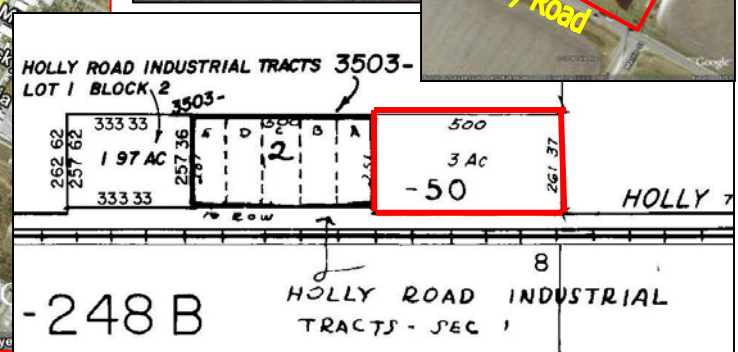
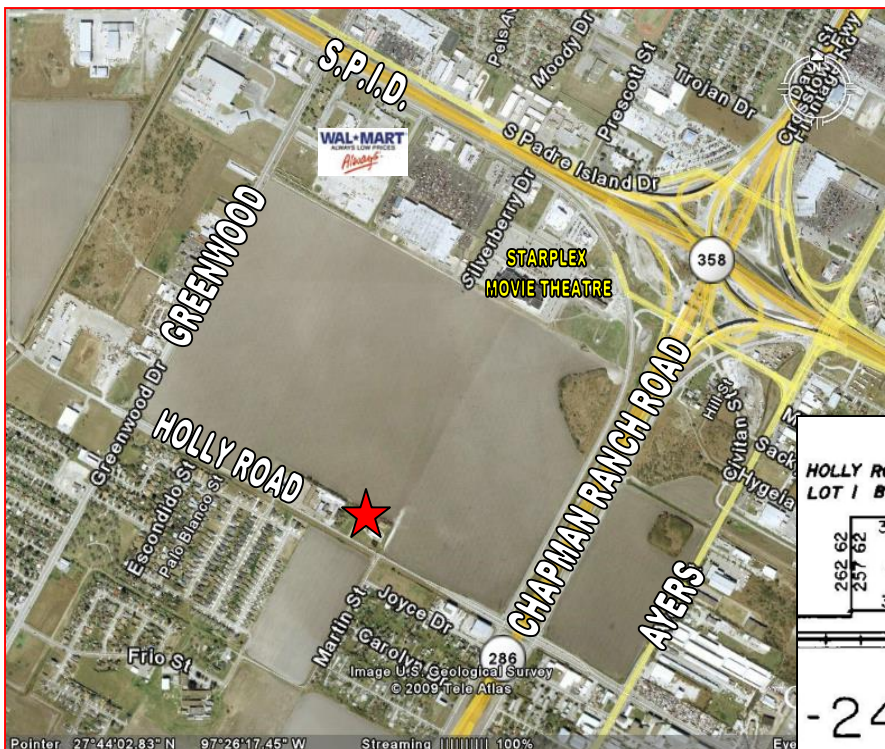
Cobb, Lundquist & Atnip, Inc.  
 700 Everhart, Suite F-11  
 Corpus Christi, Texas 78411  
 AC 361 854-4448  
 Fax 361 854-4498  
 E-MAIL [info@CLArealtors.com](mailto:info@CLArealtors.com)  
[www.CLArealtors.com](http://www.CLArealtors.com)



COMMERCIAL, INDUSTRIAL,  
 FARM & RANCH PROPERTIES

## FOR SALE Holly Road Property with Improvements

- LOCATION:** 1960 Holly Road, between Crosstown Expressway & Greenwood.
- LEGAL DESCRIPTION:** 3 acres out of Lot 5, Block 4, Bohemian Colony Lands
- PROPERTY DESCRIPTION:** **Land Size:** 3 acres ± (130,680 ± square feet)  
**Buildings:** Office is 1,584 ± sf  
 Warehouse 1 is 3,840 ± sf, Warehouse 2 is 4,800 ± square feet
- ZONING:** I-2 (Light Industry)
- TAXES:** Assessed at \$154,170.00 (2009)
- PRICE:** \$335,000.00
- COMMENTS:** Perfect site for a construction company or related industrial use.  
 Formerly Eisenhour Construction.  
**MUST CALL BROKER IN ADVANCE** to schedule showing.
- CONTACT:** WAYNE LUNDQUIST, [Wayne@CLArealtors.com](mailto:Wayne@CLArealtors.com)



This information has been secured from reliable sources, and although we do not guarantee it, we believe it to be correct. Offering is subject to prior sale, change or withdrawal without notice.