



Cobb, Lundquist & Atnip, Inc.
700 Everhart, Suite F-11
Corpus Christi, Texas 78411
AC 361 854-4448
Fax 361 854-4498
E-MAIL info@CLArealtors.com
www.CLArealtors.com



COMMERCIAL, INDUSTRIAL,
 FARM & RANCH PROPERTIES

FOR SALE COMMERCIAL TRACT

LOCATION: On Airline Road, approximately 500' south of Brooke Road (County Road 26-A)

LEGAL DESCRIPTION: Manhattan Estates Unit Two, Block 1, Lot 9.

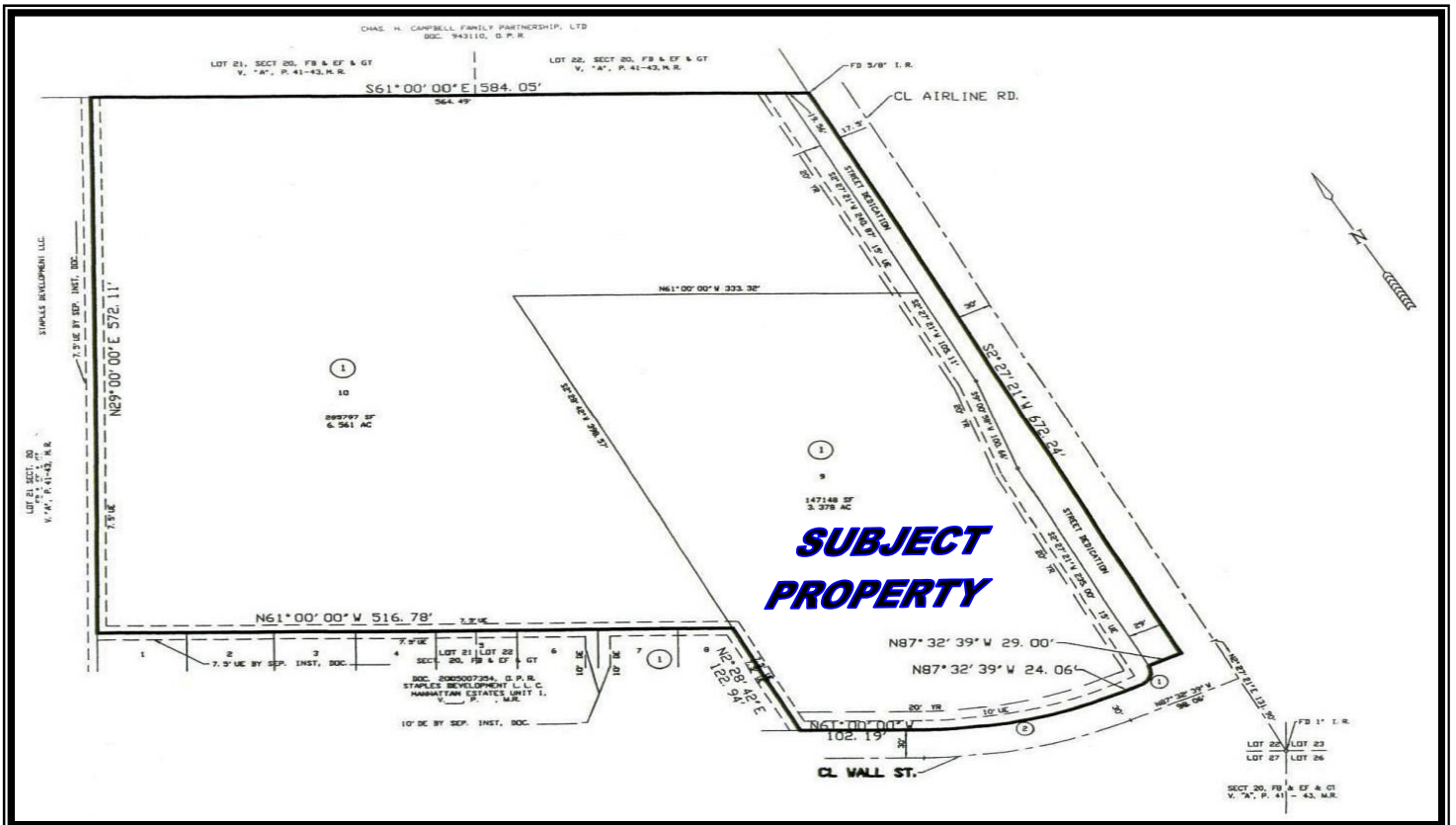
LAND SIZE: 3.378 acres, or 147,148 square feet

ZONING: CN-1 (Neighborhood Commercial). This district provides primarily for retail shopping and personal service uses.

PRICE: \$6.00 per square foot or \$882,888

COMMENTS: The tract is platted and is an ideal location to build a shopping center for this fast growing area. Airline Road is currently being expanded to five lanes between Saratoga Blvd. and Yorktown Road. The property is also close to the new CCISD high school site on Lipes Blvd.

CONTACT: **HUTCH BRYAN**
Hutch@CLArealtors.com



This information has been secured from reliable sources, and although we do not guarantee it, we believe it to be correct. Offering is subject to prior sale, change or withdrawal without notice.