



Cobb, Lundquist & Atnip, Inc.  
 700 Everhart, Suite F-11  
 Corpus Christi, Texas 78411  
 AC 361 854-4448  
 Fax 361 854-4498  
 E-MAIL [info@CLArealtors.com](mailto:info@CLArealtors.com)  
[www.CLArealtors.com](http://www.CLArealtors.com)



COMMERCIAL, INDUSTRIAL,  
 FARM & RANCH PROPERTIES

## FOR SALE COMMERCIAL PROPERTY

**LOCATION:** 3115 McArdle, Corpus Christi, Texas 78415

**LEGAL DESCRIPTION:** A portion of Lots 5 & 6, all of Lots 7 & 8, Block N and Blocks U & V, Lexington Place

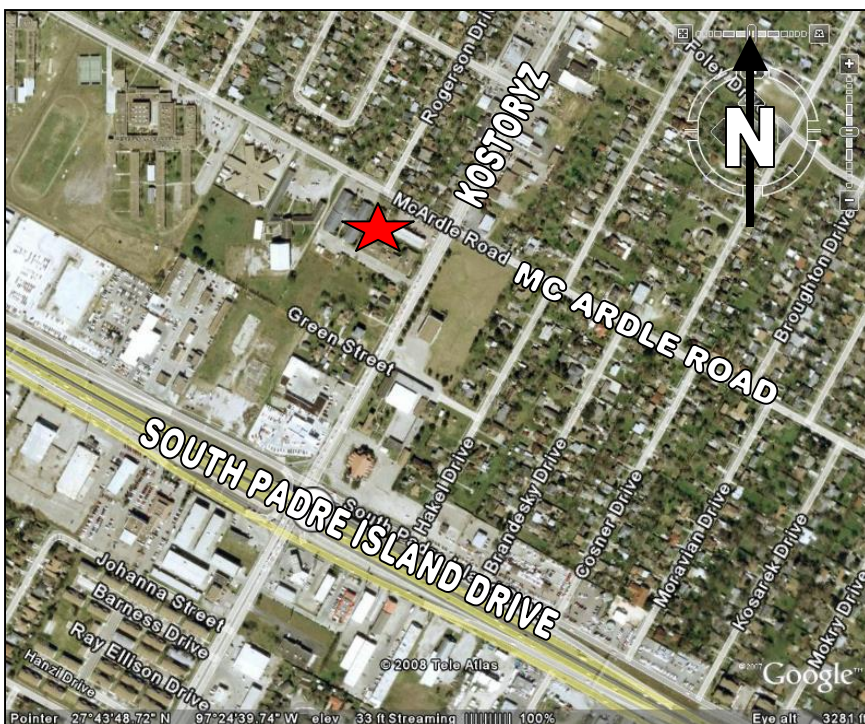
**PROPERTY DESCRIPTION:** Land Size: 100,232 square feet ±  
Building Size: 40,152 square feet ± Year Built: 1963

**ZONING:** A-B (Professional office)

**PRICE:** \$365,000.00

**COMMENTS:** This L-shaped property is located in a great central location, near Kostoryz and South Padre Island Drive. Previously used as nursing home, other potential uses could be as a regular or medical office complex, a school or a rehabilitation facility.

**CONTACT:** WAYNE LUNDQUIST, [Wayne@CLArealtors.com](mailto:Wayne@CLArealtors.com)



This information has been secured from reliable sources, and although we do not guarantee it, we believe it to be correct. Offering is subject to prior sale, change or withdrawal without notice.