



Cobb, Lundquist & Atnip, Inc.
 700 Everhart, Suite F-11
 Corpus Christi, Texas 78411
 AC 361 854-4448
 Fax 361 854-4498
 E-MAIL info@CLArealtors.com
 www.CLArealtors.com



COMMERCIAL, INDUSTRIAL,
 FARM & RANCH PROPERTIES

VACANT LAND FOR SALE

LOCATION: On Airline Road, approximately 300' south of Brooke Road (County Road 26-A)

LEGAL DESCRIPTION: Manhattan Estates Unit Two, Block 1, Lot 10.

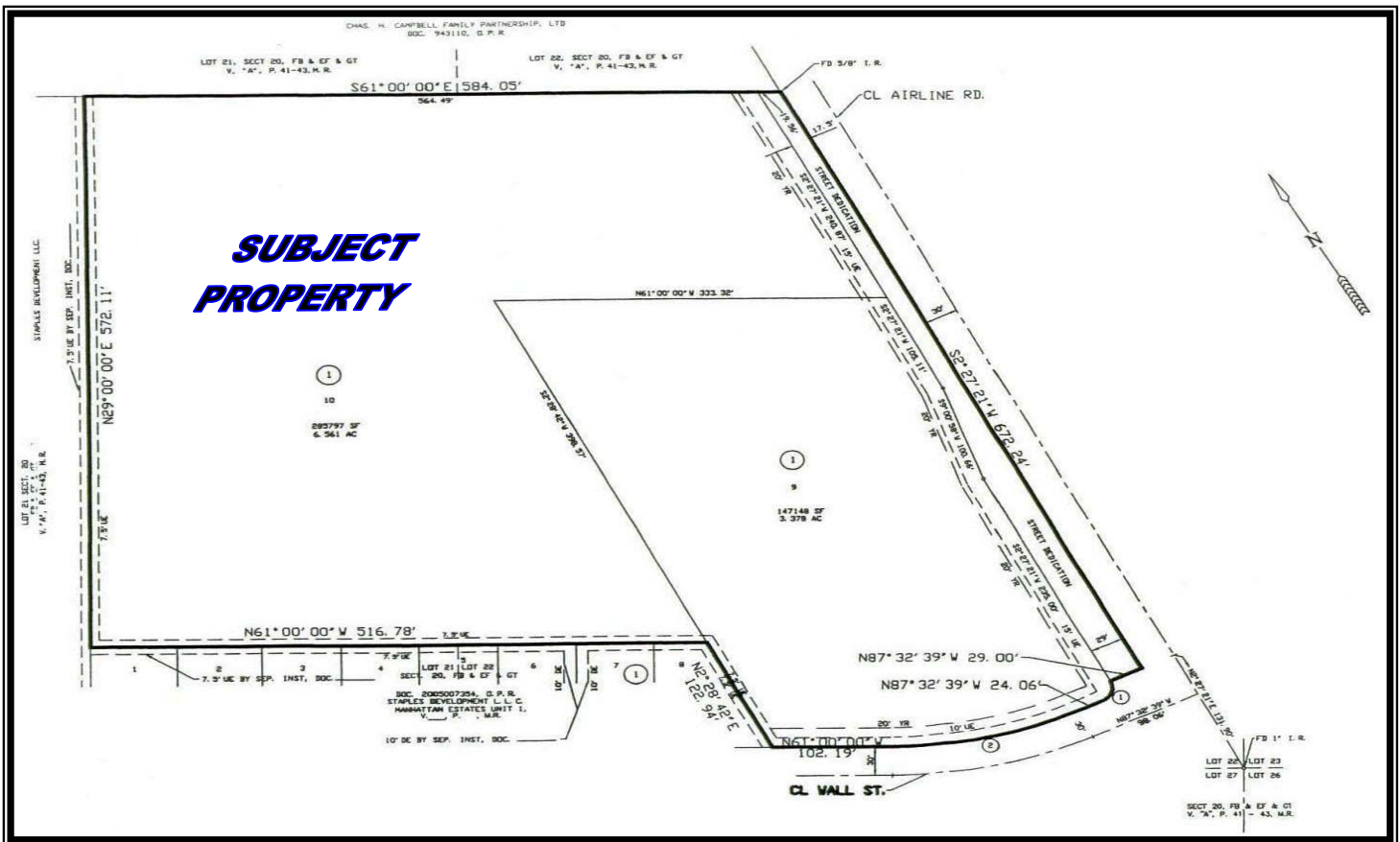
LAND SIZE: 6.561 acres, or 285,797 square feet

ZONING: A-2 (Apartment House District) This is the highest density residential district. Maximum number of units per acre is 36.3.

PRICE: \$5.00 per square foot or \$1,428,985.00

COMMENTS: This tract would be ideal for an apartment complex and is ideally located near and within the central part of the City and provides an immediate need for transient residence and also permanent residence.

CONTACT: HUTCH BRYAN: Hutch@CLArealtors.com



This information has been secured from reliable sources, and although we do not guarantee it, we believe it to be correct. Offering is subject to prior sale, change or withdrawal without notice.