



**Cobb, Lundquist & Atnip, Inc.**  
 700 Everhart, Suite F-11  
 Corpus Christi, Texas 78411  
 AC 361 854-4448  
 Fax 361 854-4498  
 E-MAIL [info@CLArealtors.com](mailto:info@CLArealtors.com)  
 www.CLArealtors.com



COMMERCIAL, INDUSTRIAL,  
 FARM & RANCH PROPERTIES

## VACANT LAND FOR SALE

**LOCATION:** On Airline Road, approximately 300' south of Brooke Road (County Road 26-A)

**LEGAL DESCRIPTION:** Manhattan Estates Unit Two, Block 1, Lot 10.

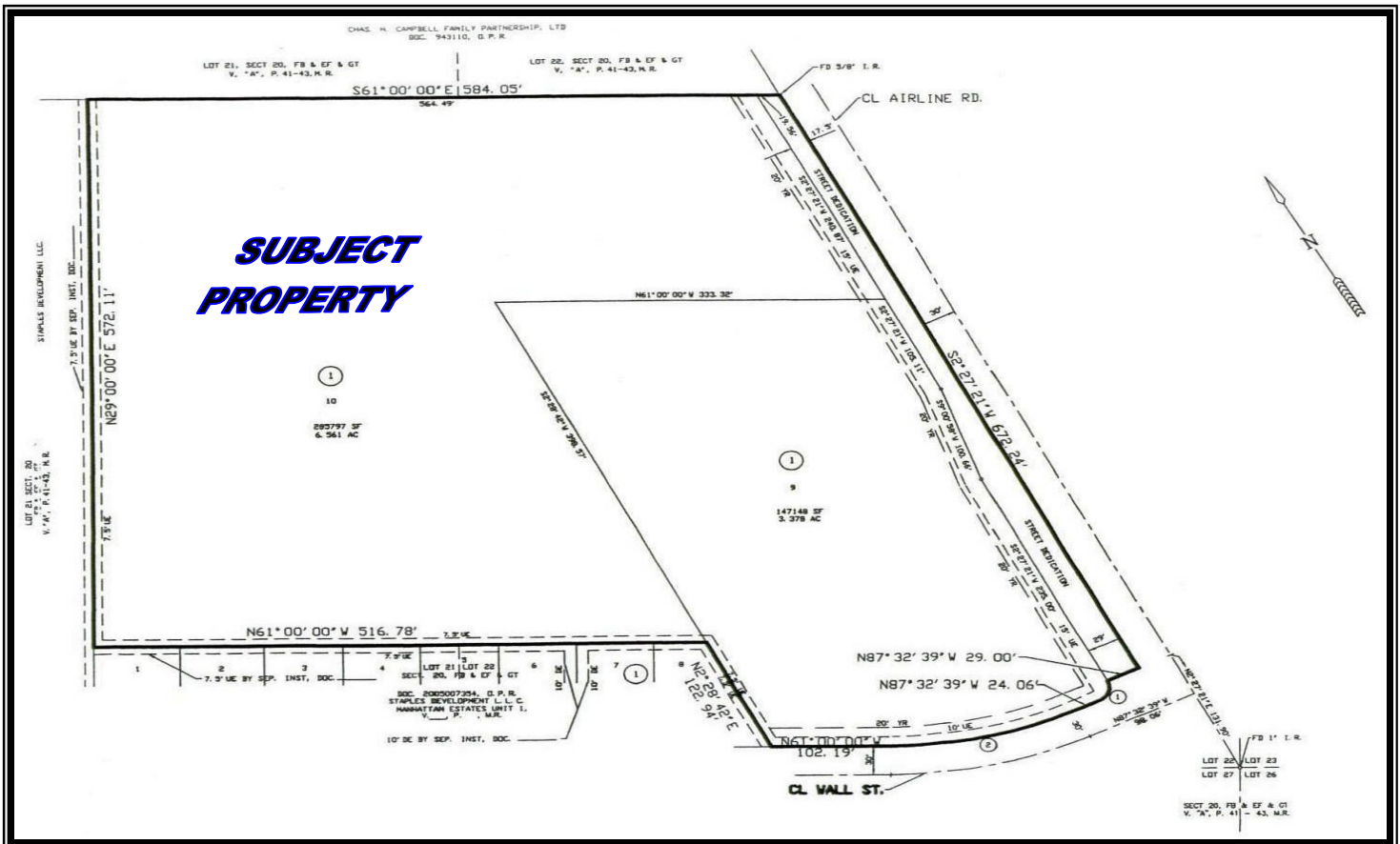
**LAND SIZE:** 6.561 acres, or 285,797 square feet

**ZONING:** RM-3 (Multifamily 3). This is the highest density residential district. Maximum number of units per acre is 36.3.

**PRICE:** \$4.00 per square foot or \$1,143,188

**COMMENTS:** This tract would be ideal for an apartment complex and is located near the new high school site on Lipps Blvd. Airline Road is currently being expanded to five lanes between Saratoga Blvd. and Yorktown Road. This tract is platted.

**CONTACT:** HUTCH BRYAN: [Hutch@CLArealtors.com](mailto:Hutch@CLArealtors.com)



This information has been secured from reliable sources, and although we do not guarantee it, we believe it to be correct. Offering is subject to prior sale, change or withdrawal without notice.