



Cobb, Lundquist & Atnip, Inc.
 700 Everhart, Suite F-11
 Corpus Christi, Texas 78411
 AC 361 854-4448
 Fax 361 854-4498
 E-MAIL info@CLArealtors.com
www.CLArealtors.com



COMMERCIAL, INDUSTRIAL,
 FARM & RANCH PROPERTIES

FOR SALE COMMERCIAL PROPERTY

LOCATION: 10801 Leopard Street, the southwest corner of Leopard & Starlight Lane

LEGAL DESCRIPTION: Annaville 1 Lot 10-A, Block B

PROPERTY DESCRIPTION: Land Size: 13,927sf Building Size: 2,700sf
Asphalt: 10,328sf Canopy: 360sf

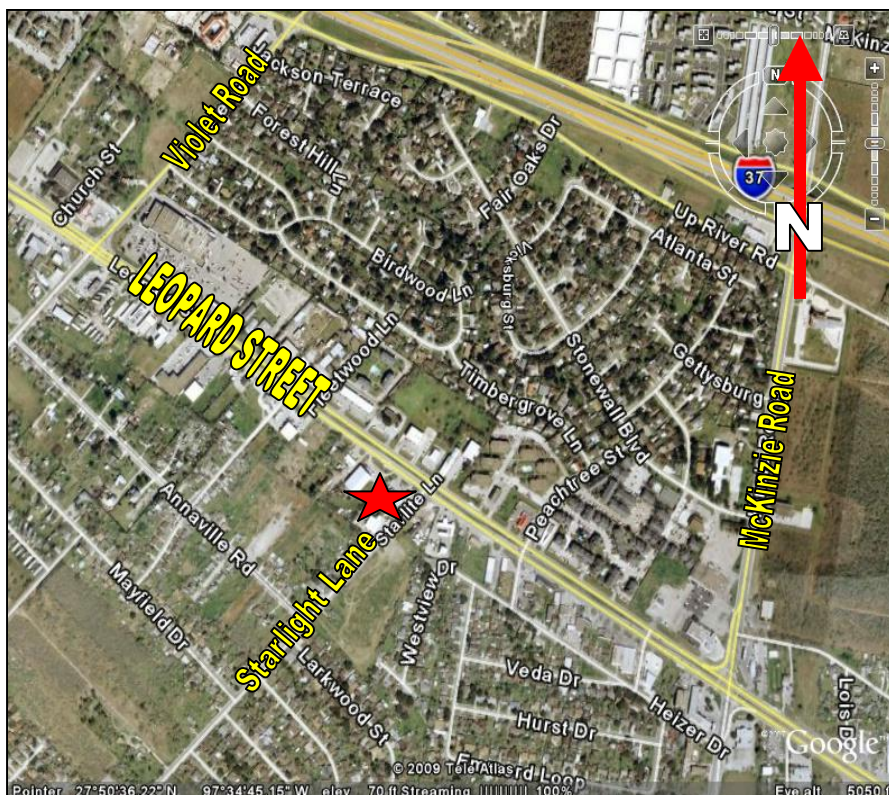
ZONING: B-1 (Neighborhood Business)

TAXES: Assessed at \$186,363.00 in 2008

PRICE: \$185,000.00

COMMENTS: Located between McKinzie Road & Violet Road. There is an Auto Zone and an Advanced Auto Parts across the street.

CONTACT: WAYNE LUNDQUIST, Wayne@CLArealtors.com



This information has been secured from reliable sources, and although we do not guarantee it, we believe it to be correct. Offering is subject to prior sale, change or withdrawal without notice.