



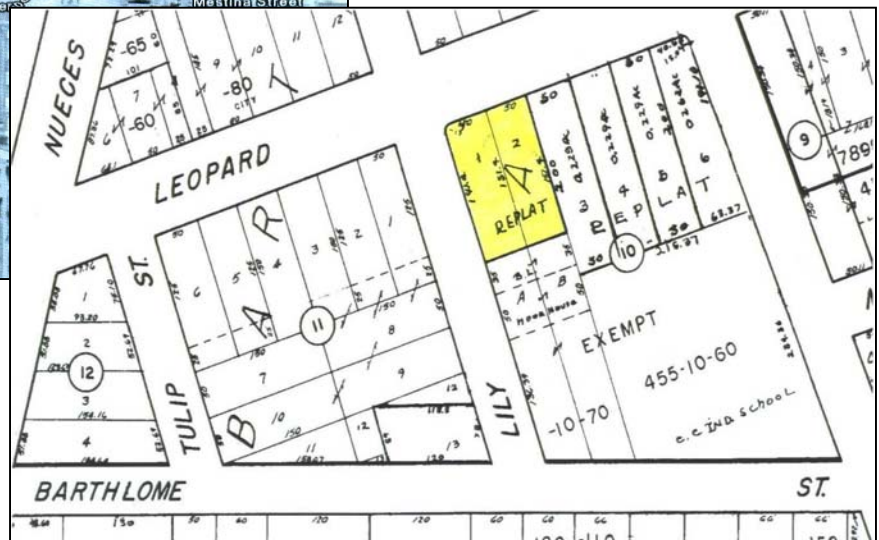
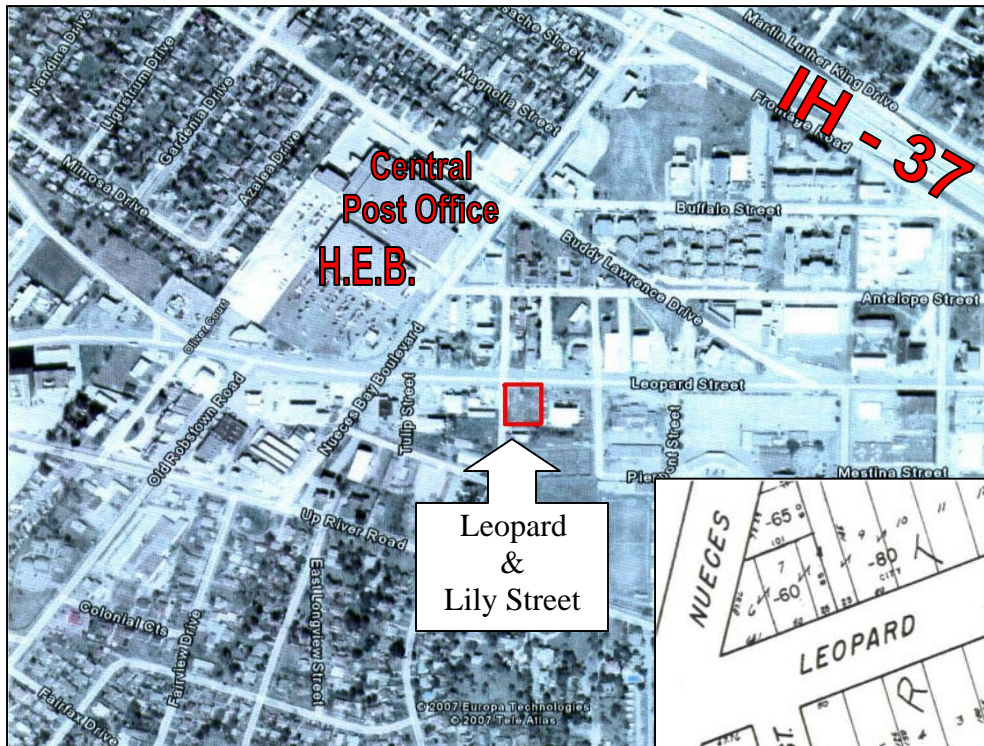
Cobb, Lundquist & Atnip, Inc.  
 700 Everhart, Suite F-11  
 Corpus Christi, Texas 78411  
 AC 361 854-4448  
 Fax 361 854-4498  
 E-MAIL [info@CLArealtors.com](mailto:info@CLArealtors.com)  
 www.CLArealtors.com



COMMERCIAL, INDUSTRIAL,  
 FARM & RANCH PROPERTIES

## LEOPARD STREET COMMERCIAL LAND

- LOCATION:** Located at the corner of Leopard & Lily Streets, just east of Nueces Bay Blvd.
- LEGAL DESCRIPTION:** Bartholome, Lots 1 & 2, Block 10
- LAND SIZE:** Approximately 14,640 square feet
- ZONING:** B-5, Business
- PRICE:** \$75,000.00
- COMMENTS:** Small business tract. Close to H.E.B. and the central post office.



**CONTACT:**  
**WAYNE LUNDQUIST –**  
[Wayne@CLArealtors.com](mailto:Wayne@CLArealtors.com)