



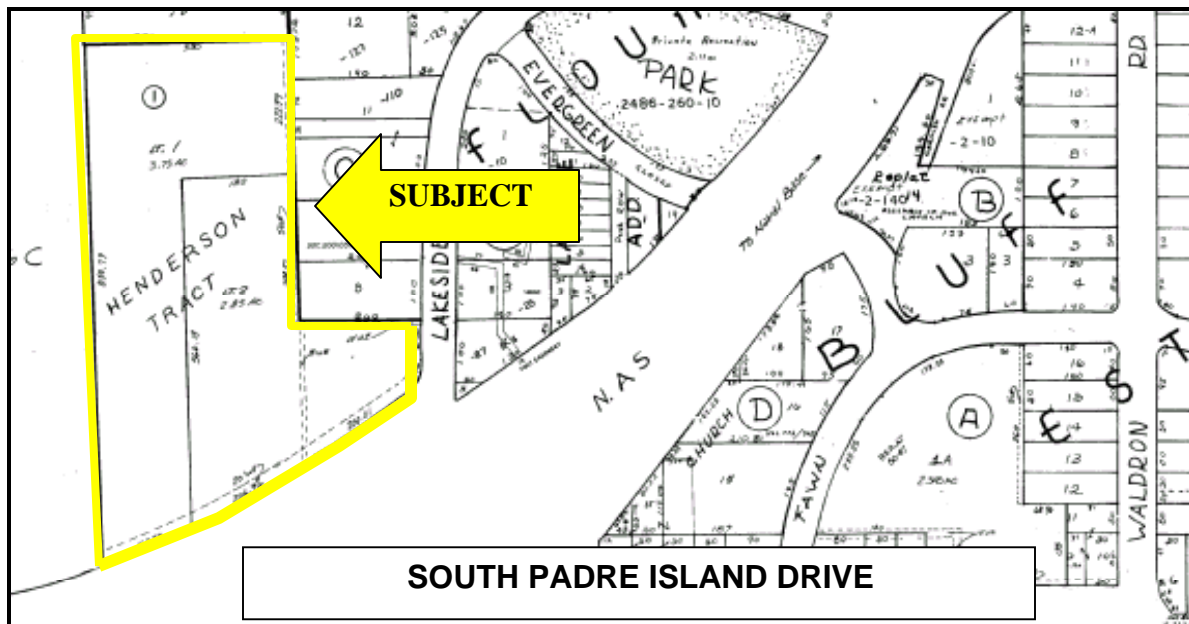
Cobb, Lundquist & Atnip, Inc.  
 700 Everhart, Suite F-11  
 Corpus Christi, Texas 78411  
 AC 361 854-4448  
 Fax 361 854-4498  
 E-MAIL [info@CLArealtors.com](mailto:info@CLArealtors.com)  
[www.CLArealtors.com](http://www.CLArealtors.com)



COMMERCIAL, INDUSTRIAL,  
 FARM & RANCH PROPERTIES

## COMMERCIAL LAND FOR SALE

- LOCATION:** South Padre Island Drive at South NAS Drive
- LEGAL:** Henderson Tract, Lot 1, Block 1, 3.75 acres and  
 Henderson Tract, Lot 2, Block 1, 2.85 acres = **Total** 6.60 acres ±
- LAND:** Vacant land with a gas well on the property, produces \$3,000 to  
 \$4,000 per year.
- SIZE:** 6.60 acres with approximately 568.99 foot frontage on NAS drive,  
 and a depth of 850 feet ±.
- ZONED:** B-3 (Business District, same as B-4 but no apartments)
- PRICE:** \$375,000.00
- REMARKS:** Ideal for commercial use. (Automotive repair, boat sales, automobile or  
 recreational vehicle sales, mobile home sales or a storage facility.)
- CONTACT:** **HUTCH BRYAN**  
[Hutch@CLArealtors.com](mailto:Hutch@CLArealtors.com)



This information has been secured from reliable sources, and although we do not guarantee it, we believe it to be correct. Offering is subject to prior sale, change or withdrawal without notice.