



Cobb, Lundquist & Atnip, Inc.
 700 Everhart, Suite F-11
 Corpus Christi, Texas 78411
 AC 361 854-4448
 Fax 361 854-4498
 E-MAIL info@CLArealtors.com
www.CLArealtors.com



COMMERCIAL, INDUSTRIAL,
 FARM & RANCH PROPERTIES

FOR SALE OR LEASE COMMERCIAL OFFICE BUILDING

LOCATION: 1225 – 1233 Agnes Street (One Agnes Plaza), located at the corner of Agnes and 10th Street, just west of Alameda.

LEGAL

DESCRIPTION: Chamberlin’s, Lots 1 thru 12 and Lots 21 thru 32, Block 12

PROPERTY

DESCRIPTION: Approximately 75,000sf land (300FF x 250’ deep) having a 44,000sf brick building

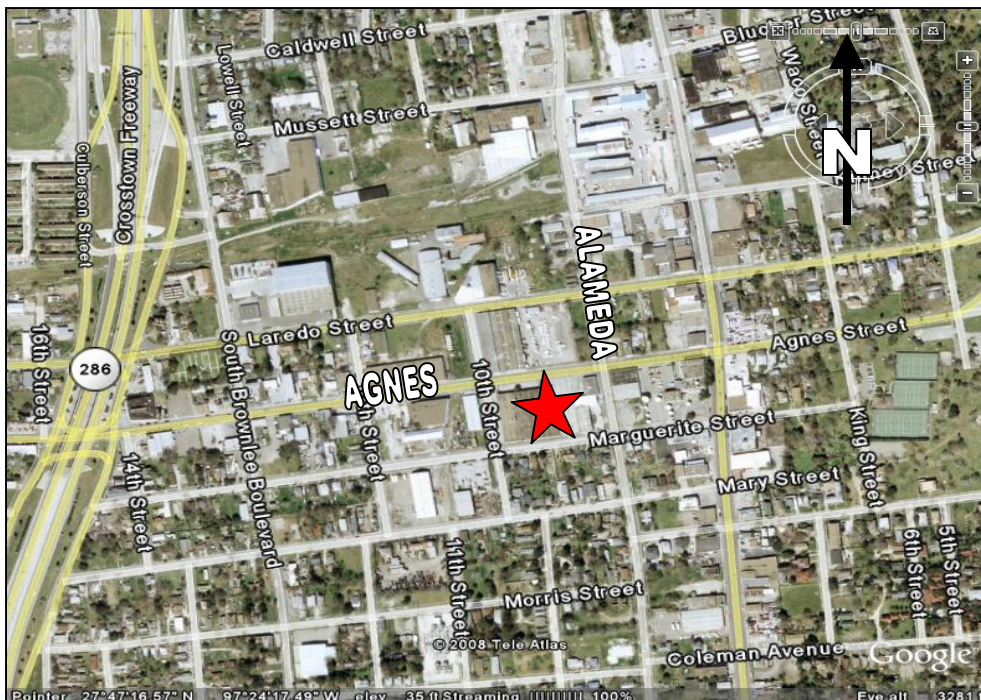
ZONING: I-2

TAXES: Assessed value (2007) - \$401,540.00

PRICE: \$1,000,000.00

COMMENTS: Completely renovated office building with ample parking. Six (6) overhead doors. Office space is available for lease @ \$0.70/psf.

CONTACT: WAYNE LUNDQUIST – Wayne@CLArealtors.com



This information has been secured from reliable sources, and although we do not guarantee it, we believe it to be correct. Offering is subject to prior sale, change or withdrawal without notice.