

Former Portland City Hall

900 Moore Ave. | Portland | Texas | 78374



For Sale

\$155,000

(\$41.14 sq.ft. per building area)



Zoning: OT-2, Old Town Mixed Use District

Land Size: Approx 1 Acre

Building Size: Total building size is 3,593.75 square feet.

Location: 900 Moore Ave. Portland Texas 78374

Property Description: The former City Hall was built in the 1960's and is concrete block construction with a concrete roof. The exterior has concrete finishes with long vertical windows. The front entry door is glass with windows on either side. There is one additional exterior door at the rear of the property. The interior finishes are sheet rock walls with paint, carpet and VCT tiles with a drop ceiling and fluorescent lighting. The building has two large private office areas, the old city council chambers room, three private offices, storage/file area, concrete vault room, and large work area with drive through window.

The HVAC has been repaired and is cooling. There is one known roof leak in the back corner of the building.

There is a very small building at the back of the rear parking lot that is used for storage.

Contact: **Cliff Atnip**

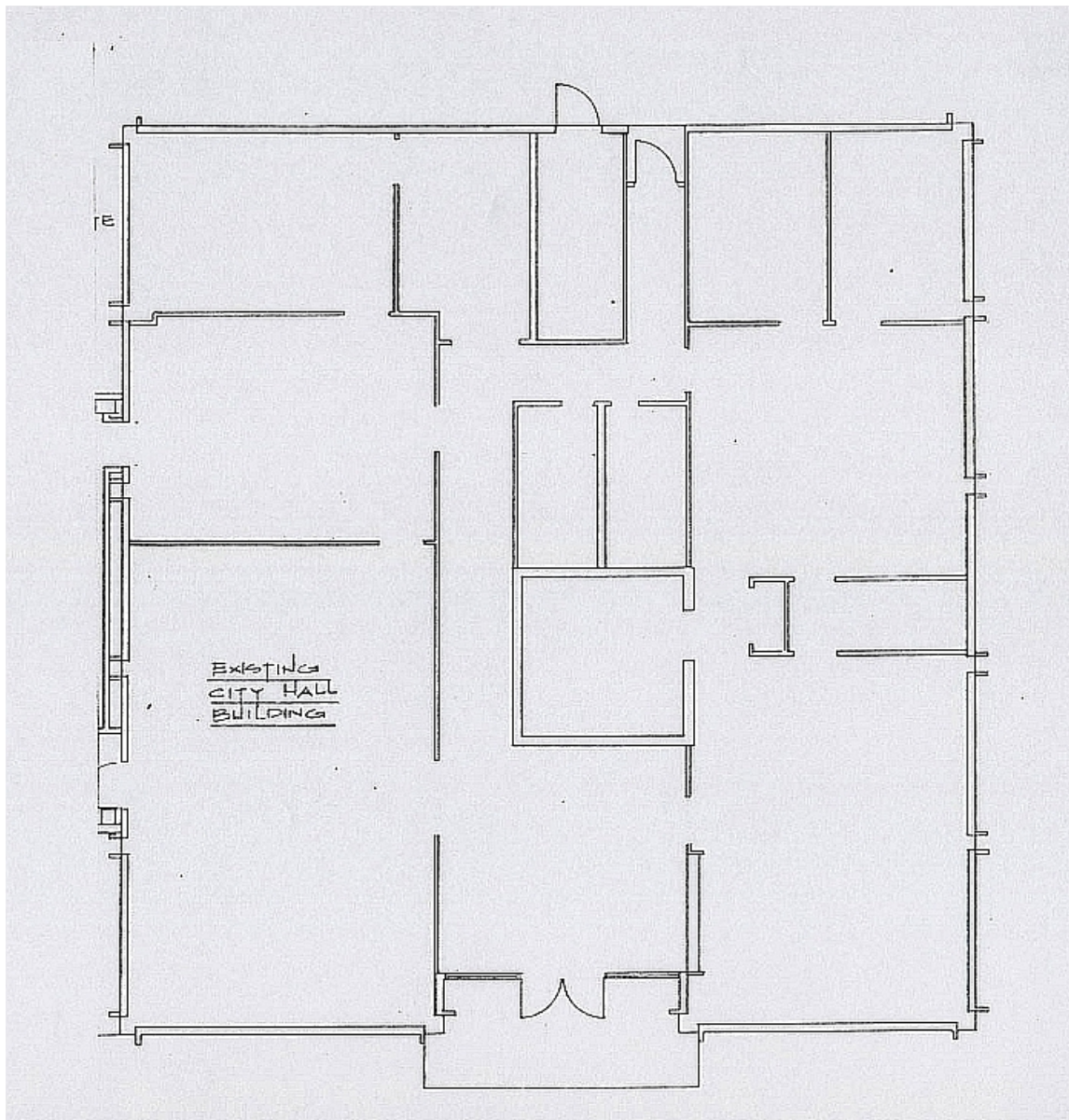
Cobb, Lundquist & Atnip, Inc.

700 Everhart Rd. Suite F-11 Corpus Christi, TX 78411

(361) 854-4448

Cliff@cliffatnip.com

Former Portland City Hall FLOOR PLAN



Contact: **Cliff Atnip**

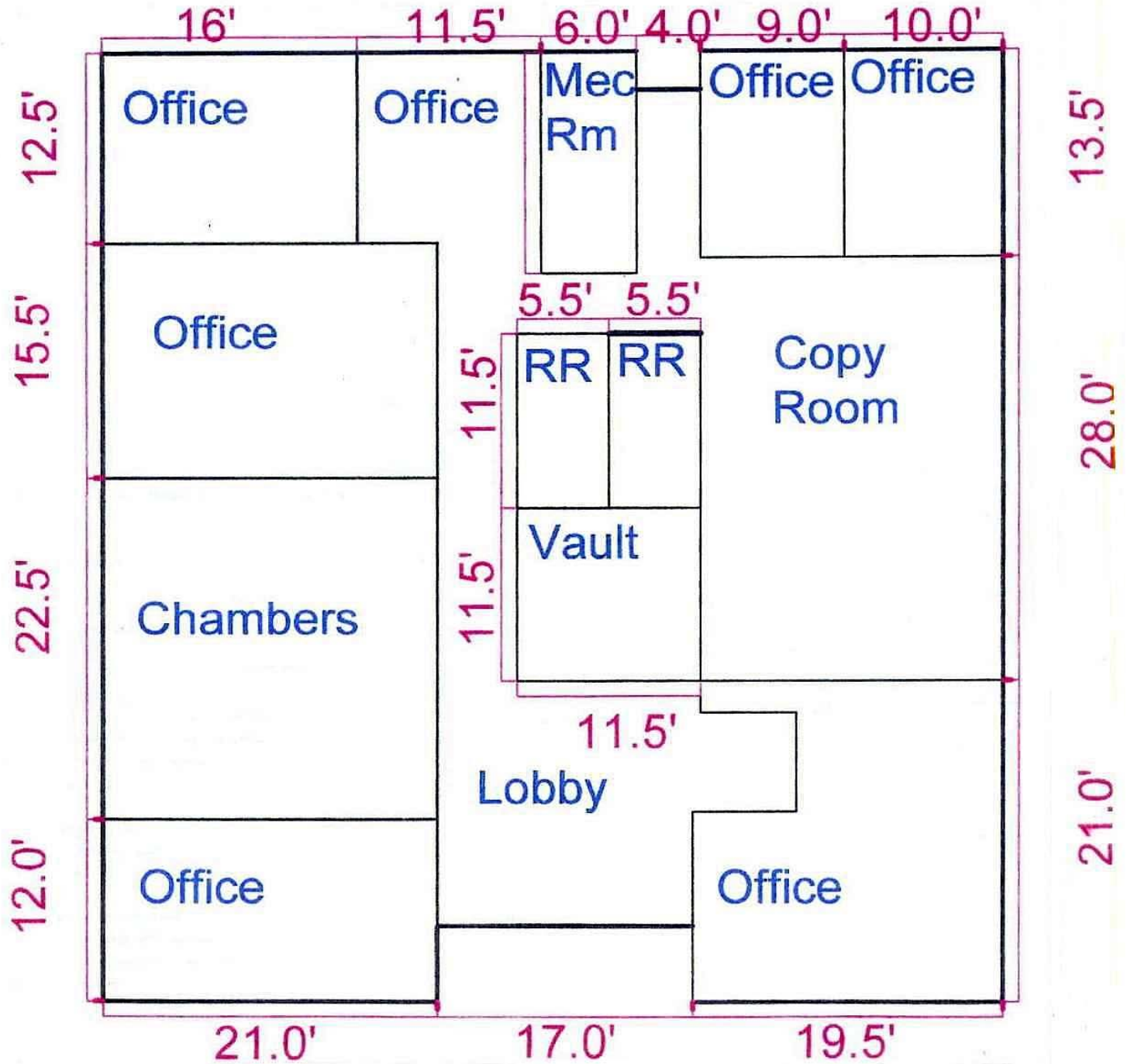
Cobb, Lundquist & Atnip, Inc.

700 Everhart Rd. Suite F-11 Corpus Christi, TX 78411

(361) 854-4448

Cliff@cliffatnip.com

Former Portland City Hall FLOOR PLAN



Contact: **Cliff Atnip**

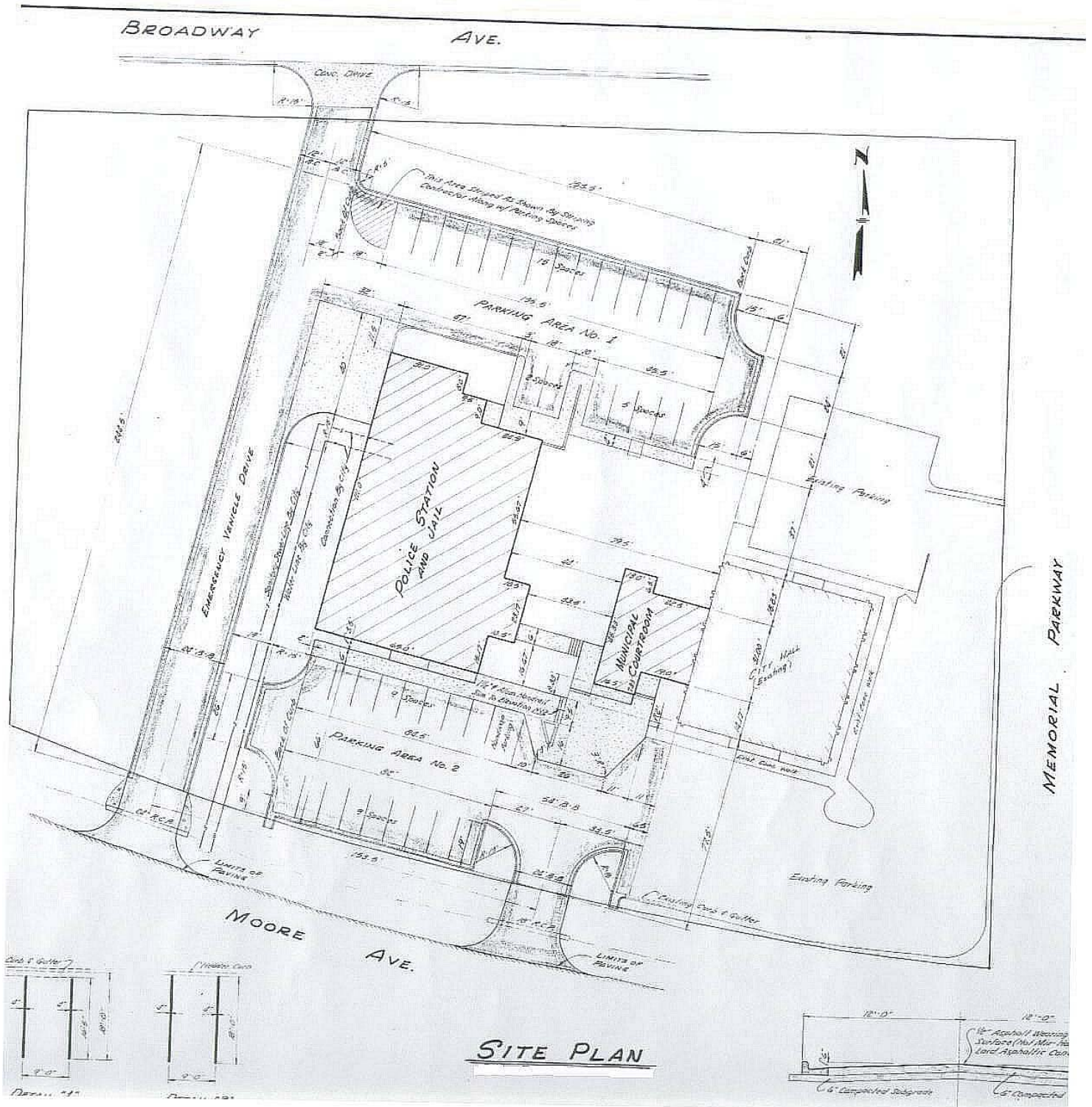
700 Everhart Rd. Suite F-11 Corpus Christi, TX 78411

(361) 854-4448

Cobb, Lundquist & Atnip, Inc.

Cliff@cliffatnip.com

Former Portland City Hall & Police Station SITE PLAN



Contact: **Cliff Atnip**
Cobb, Lundquist & Atnip, Inc.

700 Everhart Rd. Suite F-11 Corpus Christi, TX 78411
(361) 854-4448
Cliff@cliffatnip.com

This information has been secured from reliable sources, and although we do not guarantee it, we believe it to be correct. Offering is subject to prior sale, change or withdrawal without notice.

Former Portland Police Station Location Aerial Map



Contact: Cliff Atnip

Cobb, Lundquist & Atnip, Inc.

700 Everhart Rd. Suite F-11 Corpus Christi, TX 78411

(361) 854-4448

Cliff@cliffatnip.com