



Cobb, Lundquist & Atnip, Inc.  
 700 Everhart, Suite F-11  
 Corpus Christi, Texas 78411  
 AC 361 854-4448  
 Fax 361 854-4498  
 E-MAIL [info@CLArealtors.com](mailto:info@CLArealtors.com)  
[www.CLArealtors.com](http://www.CLArealtors.com)



COMMERCIAL, INDUSTRIAL,  
 FARM & RANCH PROPERTIES

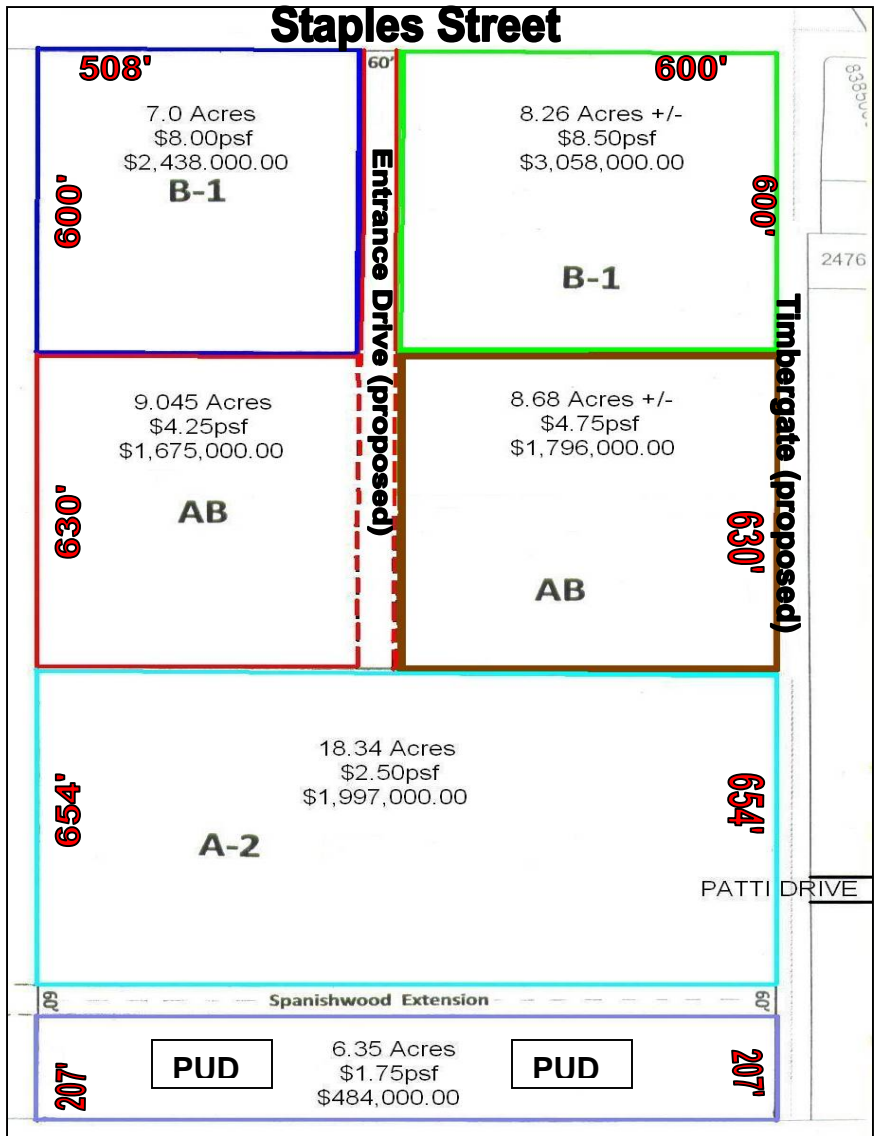
## STAPLES STREET TRACT FOR SALE

**LOCATION:** South Staples @ Timbergate      **LAND SIZE:** Multiple Tracts - see proposed plat

**ZONING:** Multi-Use      **UTILITIES:** All Available

**PRICE:** Varies – see proposed plat      **ZONING:** All sales are subject to re-zoning

**COMMENTS:** Seller proposes a central entrance drive to provide access to rear parcels.



### COLOR KEY

|                      |            |
|----------------------|------------|
| Green lined section  | \$8.50/psf |
| Navy lined section   | \$8.00/psf |
| Brown lined section  | \$4.75/psf |
| Red lined sections   | \$4.25/psf |
| Aqua lined section   | \$2.50/psf |
| Purple lined section | \$1.75/psf |

**CONTACT:**      **WAYNE LUNDQUIST** – [Wayne@CLArealtors.com](mailto:Wayne@CLArealtors.com)  
 or **BILL FERGUSON** - [billferguson@fbrealestate.com](mailto:billferguson@fbrealestate.com)

This information has been secured from reliable sources, and although we do not guarantee it, we believe it to be correct. Offering is subject to prior sale, change or withdrawal without notice.