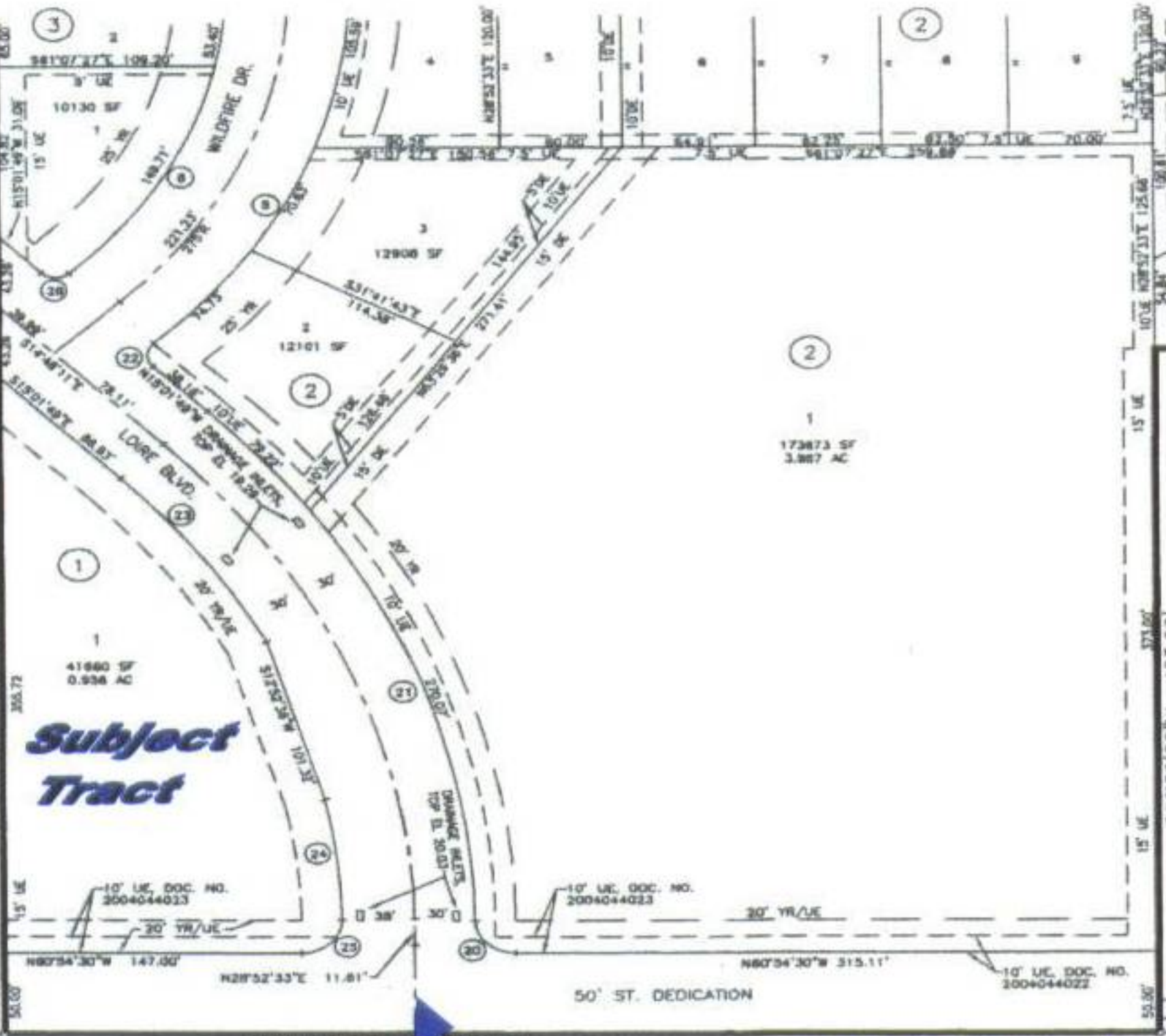


N28°52'33"E 1018.06'

**Subject Tract**



2  
1  
173873 SF  
3.887 AC

N61°07'27"W 540.00'

S28°52'33"W 423.00'

50' ST. DEDICATION

N60°54'30"W 567.12'

**Loire Blvd.**

**Yorktown Boulevard**

CL YORKTOWN BLVD



FD 3/8" I.R.